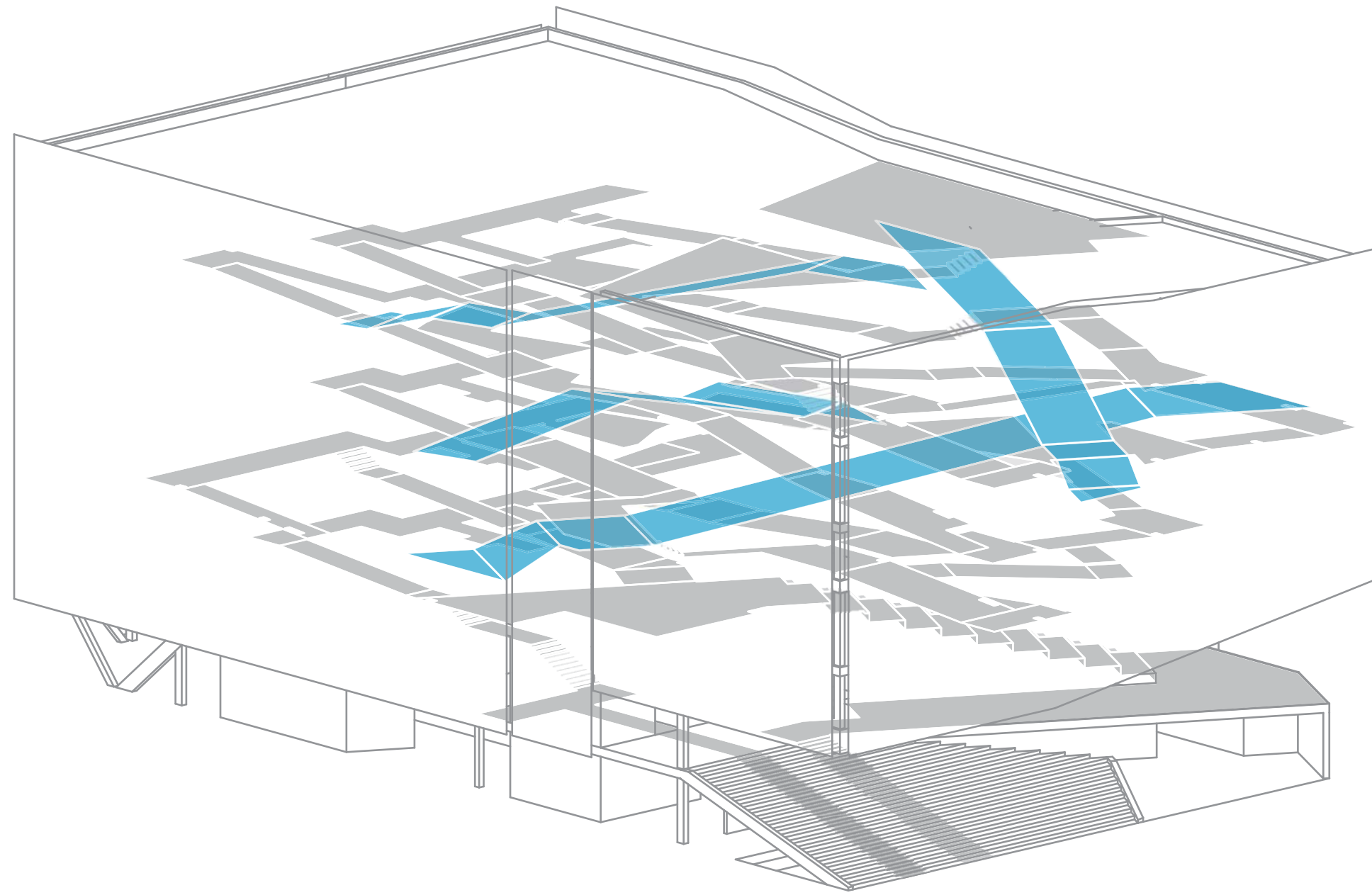
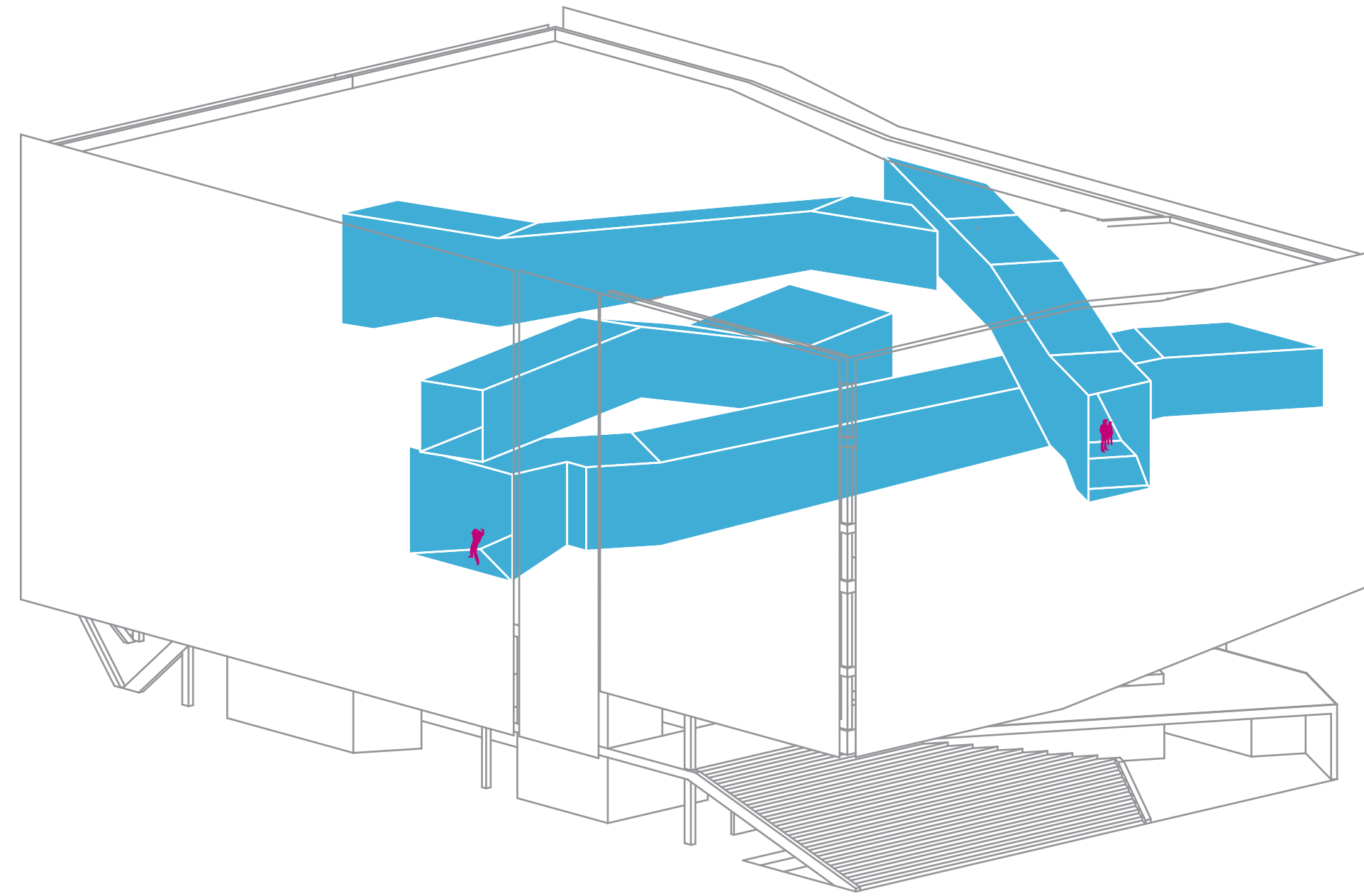


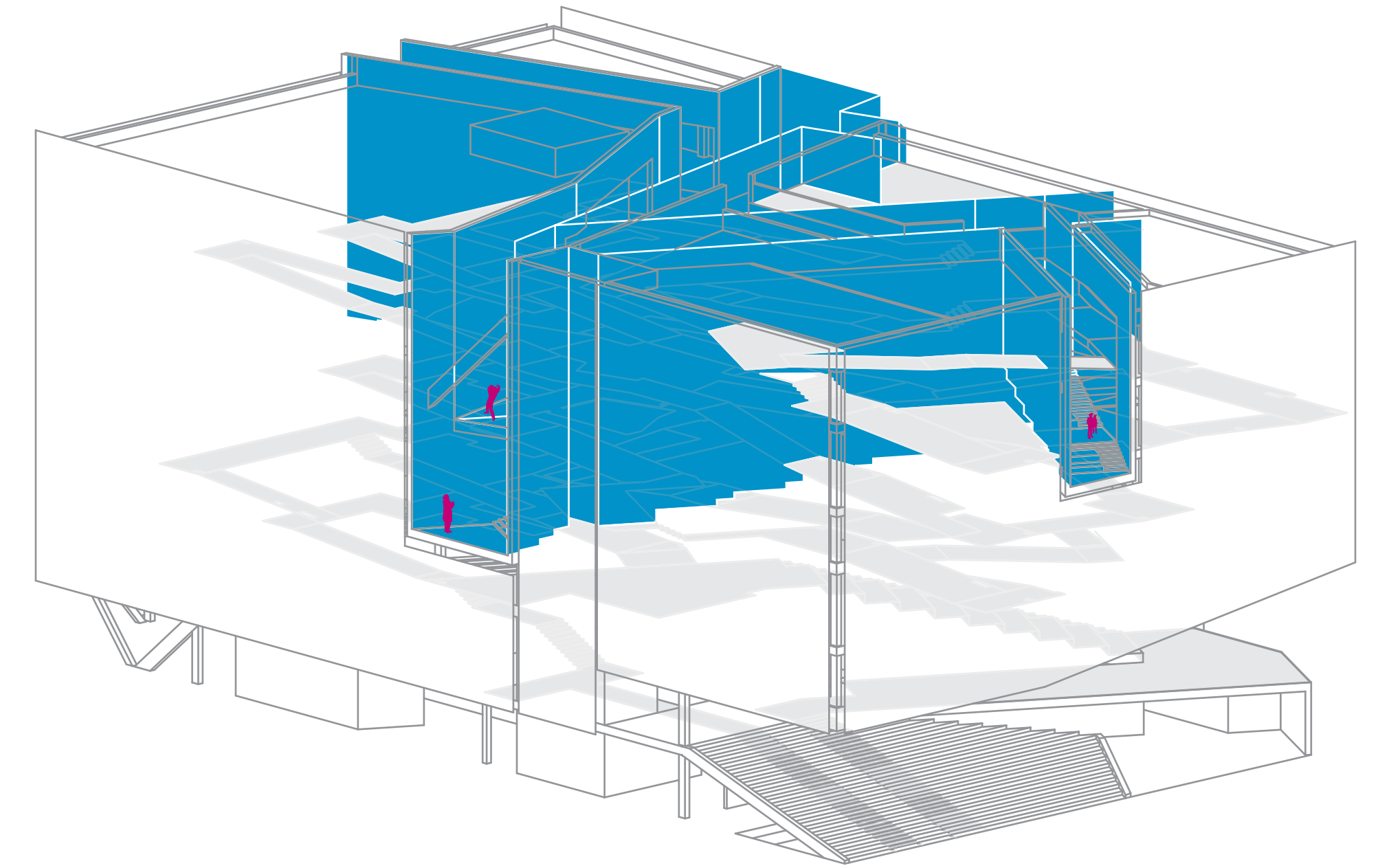
# VOID SPACE DEVELOPMENT



The large void spaces began as shortcuts between the two programmatic strands in the project. Because the helical strands ran parallel up the building, these interventions were employed to create direct connections between the two halves. As an easy way to bypass the linear progression of the spaces to shortcut across to different parts of the project, these spaces become heavily used, and this provides rich architectural opportunities.



The next iteration in the development of the defining voids in the building was to frame the shortcuts created by connecting the two strands. Each one of these extruded shafts now can frame a critique space at one end. By locating the critique spaces at the end of these circulation shortcuts, the critique process is elevated to a very public event; the presentation is visible to everyone navigating these avenues.



The previous version was still unsatisfactory in the ultimate goal of achieving hyperconnectivity, however. By enclosing the circulation shafts, presentation audiences would be limited to only those passing through the allotted avenue. The final iteration was to extrude these shafts to create artificial canyons within the space. Critique spaces now become visible from multiple vantage points in the building and the corresponding circulation avenues become active social spaces.