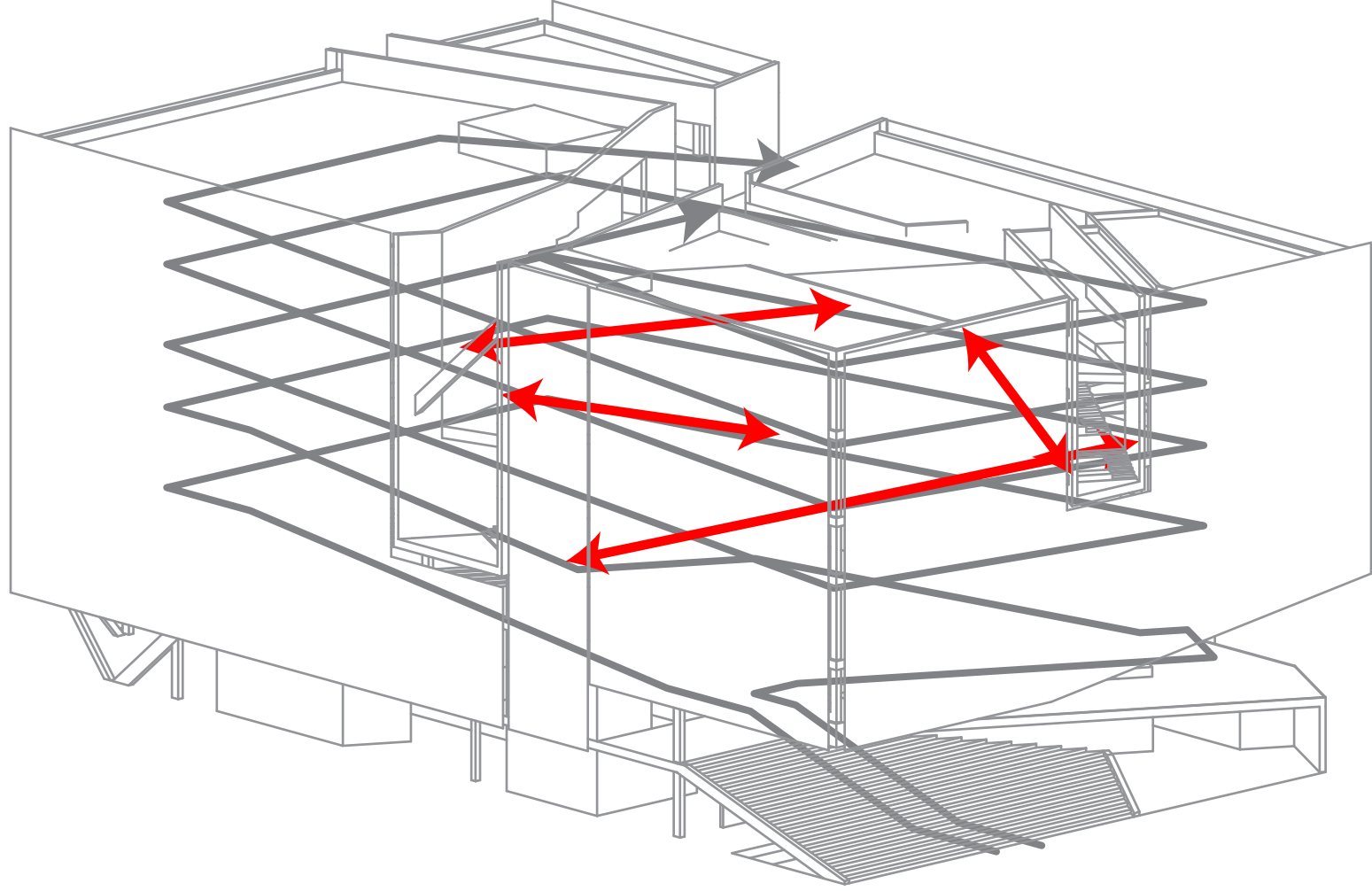
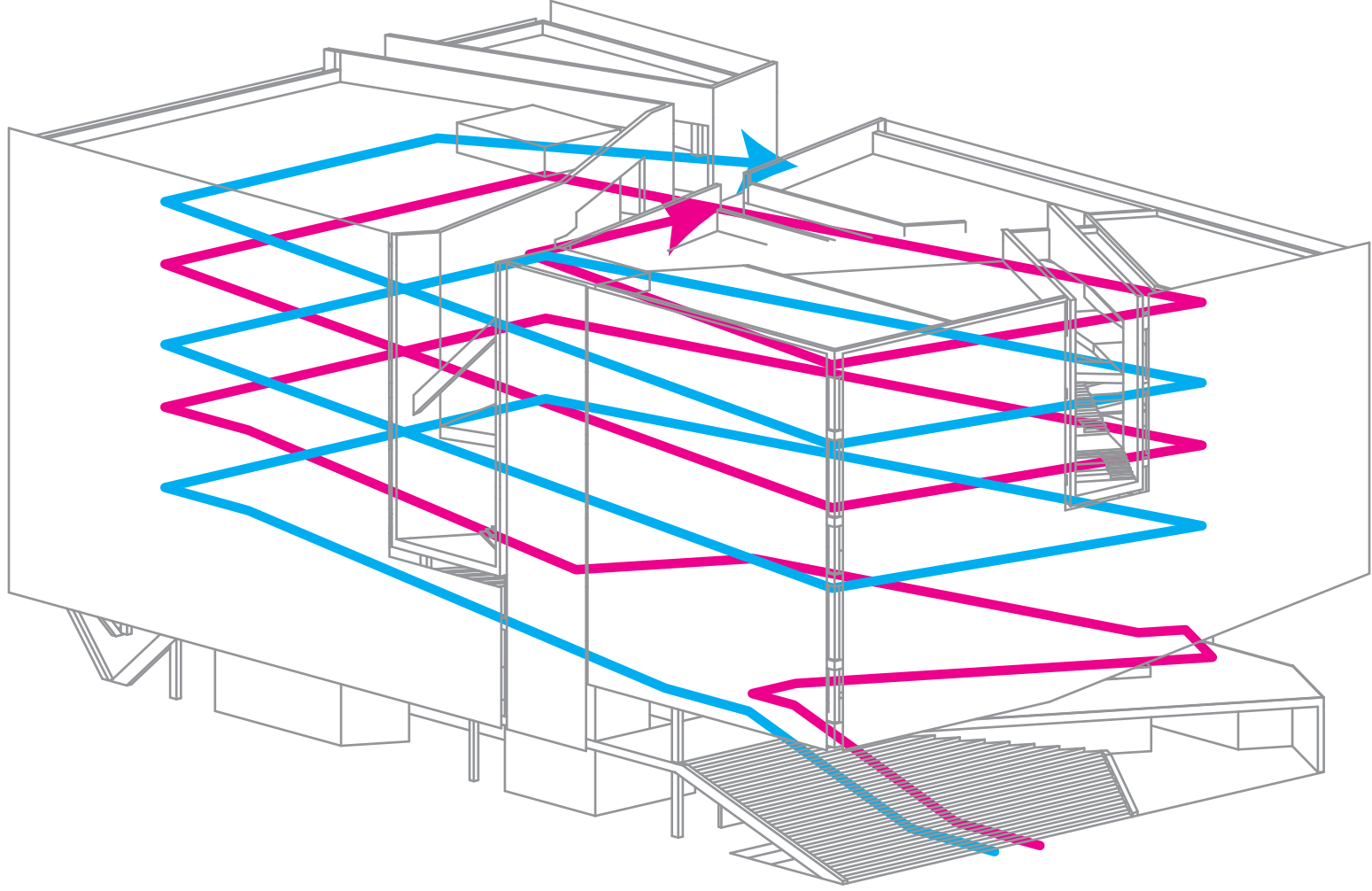
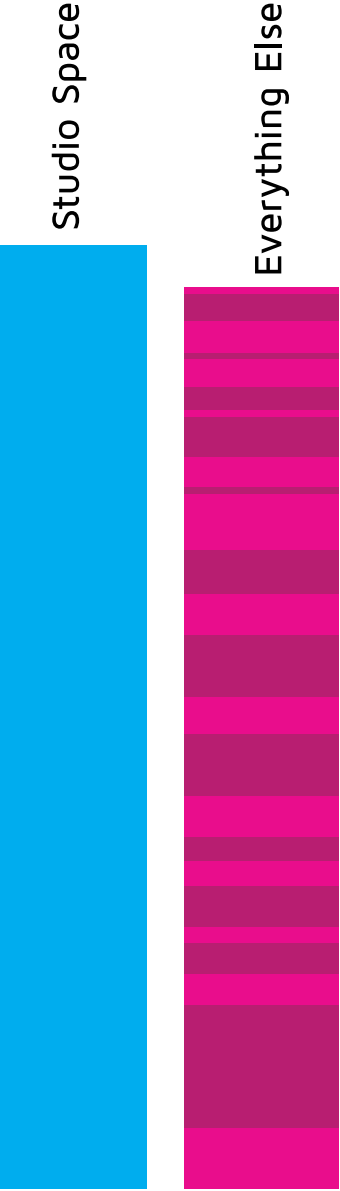
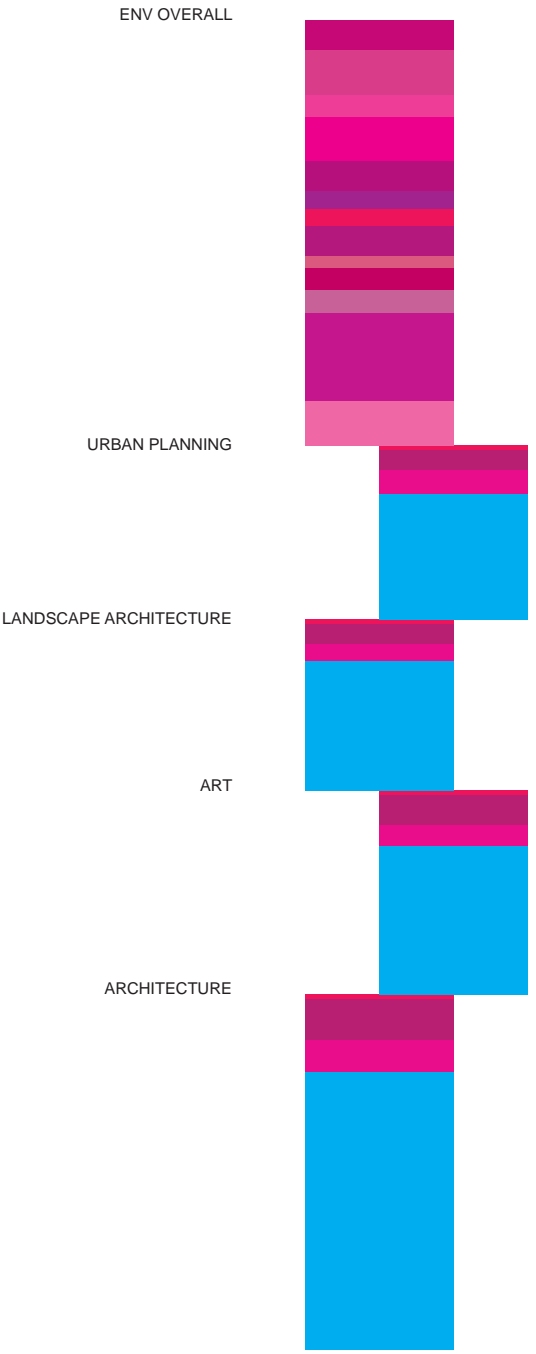


PARTI DEVELOPMENT



While large and complex, the program of the College of Environmental Design facility has certain elements repeated for each department. It would be easy, then, to compartmentalize each department as a separate entity. These similarities, however, also allow for a different approach to the programmatic layout of the spaces, one in which interdepartmental connectivity is highly encouraged.

From this different approach, then, the program of the College of Environmental Design facility breaks down almost evenly between studio space and everything else. This division can be translated into two separate yet parallel strands for diagrammatic and progressional clarity.

In order to achieve a clear, linear progression for each of the program strands on the site a helical circulation is employed. This method allows for a clear, easily understandable program layout that is continuous for the entirety of the building.

While the helical circulation saves space, it does not connect the separate strands, each run parallel. To mitigate the issue shortcuts are inserted connecting the two strands at various locations. These shortcuts provide ample architectural opportunities and become the basis for the void spaces central to the design.